

# RSA Learning Assessments

Free, on-line tool that lets customers target training options that fit their learning requirements:

- Customers can assess their RSA product knowledge and identify learning gaps
- Available to individuals as a self-service tool on the RSA Education website
- Each assessment taker receives immediate feedback on results
- Group assessments can be administered to identify learning gaps across a team
- Management reporting can be provided that evaluates individual and group results.

## Key Benefits:

- Customers can plan and position their security training dollars cost-effectively.
- Customers have confidence that both the time and financial investment in training will enable faster technology adoption and increase productivity.

# RSA Learning Assessments

- RSA Adaptive Authentication (On Premise)
- RSA Archer
- RSA Data Loss Prevention
- RSA SecurID
- Security Awareness in the Workplace

Coming Soon:

- RSA enVision
- RSA NetWitness
- Cloud Security Fundamentals

For more information, email : [learningassessments@rsa.com](mailto:learningassessments@rsa.com)



# Sample Assessment

RSA Archer Learning Assessment  
**Assessment**

LOGIN CONFIRM LOGIN ASSESSMENT (PAGE 8 OF 10) SUMMARY REVIEW

### Domain I: System Configuration Management

The technologist working with the RSA Archer product should have a fundamental knowledge of key features benefits of the product, and should be able to demonstrate how the product solves important business issues.

8. In an application using multiple Record Permission fields, which of the following statements must be true for a user to view an existing record?

- The user's name does not need to be selected in any of the Record Permissions fields, but he must have an access role that grants him Create rights to the application.
- The user's name must be selected in one or more of the Record Permissions fields.
- All records within the application must have been promoted to the Published status.
- The user's name must be selected in ALL of the Record Permissions fields.

[← Prev Page](#)

RSA Archer Learning Assessment  
**Assessment Review**

LOGIN CONFIRM LOGIN ASSESSMENT SUMMARY REVIEW

Below is a scored review of your assessment. All questions are shown.

✔ Correct Answer ✘ Incorrect Answer ! Partially Correct or Essay Question

### Domain I: System Configuration Management

Earned 7 of 10 points (70%).

5. Which Advanced Search feature allows a user to build a search that reaches across multiple applications?

Your Answer: ✔ Add New Relationship  
Correct Answer: Add New Relationship

✔ Explanation

To perform a search across multiple applications, the user must add the additional applications to the search via the Add New Relationship feature in the Advanced Search Fields to Display section.

6. Which of the following frequencies is NOT an option for Subscription Notifications?

Your Answer: ✘ Instantly  
Correct Answer: Hourly

✘ Explanation

Subscription Notifications can be delivered instantly, in digest format (daily, weekly or monthly), or they may be triggered based on a date field's value.

7. All of the following are methods for granting record-level access to users and groups EXCEPT:

Your Answer: ✔ Calculated permissions

For more information, email : [learningassessments@rsa.com](mailto:learningassessments@rsa.com)

# Sample Reports

## RSA Archer Learning Assessment



### Respondent Short Analysis

Assessment ID: RSA-ARCHER-082012

Email Address: [rsamofvera3@rsa.com](mailto:rsamofvera3@rsa.com)  
 Company Name: RSA  
 Full Name: Olivero, Megan  
 Phone Number:  
 Date Started: 09/25/2012 3:23:57 PM  
 Date Completed: 09/25/2012 3:27:22 PM

#### Question Group

Num	Question	Max Points	Earned Points	Result
<b>General Questions</b>				
1.	Have you attended any RSA Archer training in the p ...	0	0	SURVEY
2.	Do you feel that you have the necessary knowledge ...	0	0	SURVEY
3.	What specific topics would you find valuable to kn ...	0	0	SURVEY
4.	Would you like someone from RSA Education Services ...	0	0	SURVEY
<b>Domain I: System Configuration Management</b>				
5.	Which Advanced Search feature allows a user to bui ...	1	1	CORRECT
6.	Which of the following frequencies is NOT an optio ...	1	0	INCORRECT
7.	All of the following are methods for granting reco ...	1	1	CORRECT
8.	In an application using multiple Record Permission ...	1	1	CORRECT
9.	When an administrator selects the "As Needed" opti ...	1	1	CORRECT
10.	What happens when you select the Round Robin optio ...	1	1	CORRECT
11.	Which of the following application statuses will r ...	1	1	CORRECT
12.	If an application has 10 fields, and a data import ...	1	1	CORRECT
13.	Data-Driven Events can be used for which three of ...	1	0	INCORRECT
14.	In order for a user to see information included in ...	1	0	INCORRECT
		10	7	70%
<b>Domain II: Security Administration</b>				
15.	If an Archer user needs to send the complete conte ...	1	0	INCORRECT
16.	Security parameters are used for which of the foll ...	1	0	INCORRECT
17.	Which of the following is NOT a page-level privle ...	1	1	CORRECT
18.	If a group is associated with an access role and t ...	1	0	INCORRECT
19.	Which of the following statements does NOT apply t ...	1	1	CORRECT
20.	Users can be granted access to information at what ...	1	1	CORRECT
21.	All system users automatically belong to a built-i ...	1	1	CORRECT
22.	Scenario: you have two users with the same first a ...	1	1	CORRECT
		8	5	63%

## RSA Archer Learning Assessment



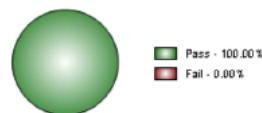
Assessment ID: RSA-ARCHER-082012

Criteria: None.

### Question Group Name Group Analysis

#### 1. General Questions

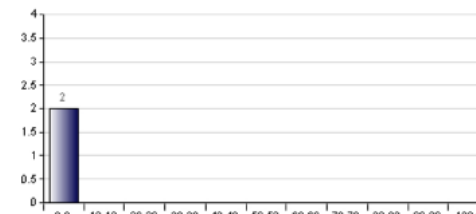
Group Pass / Fail Analysis



Total Respondents: 2  
 Passing Respondents: 2  
 Failing Respondents: 0

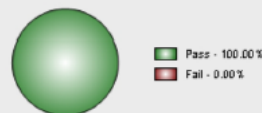
Total Points: 0  
 Earned Points: 0  
 Average Score: 0.00%

Group Score Distribution Chart



#### 2. Domain I: System Configuration Management

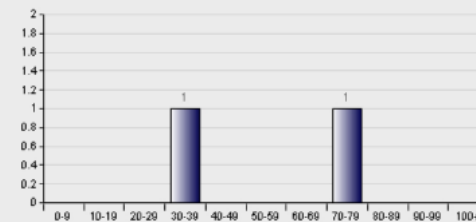
Group Pass / Fail Analysis



Total Respondents: 2  
 Passing Respondents: 2  
 Failing Respondents: 0

Total Points: 20  
 Earned Points: 10  
 Average Score: 50.00%

Group Score Distribution Chart



For more information, email : [learningassessments@rsa.com](mailto:learningassessments@rsa.com)

